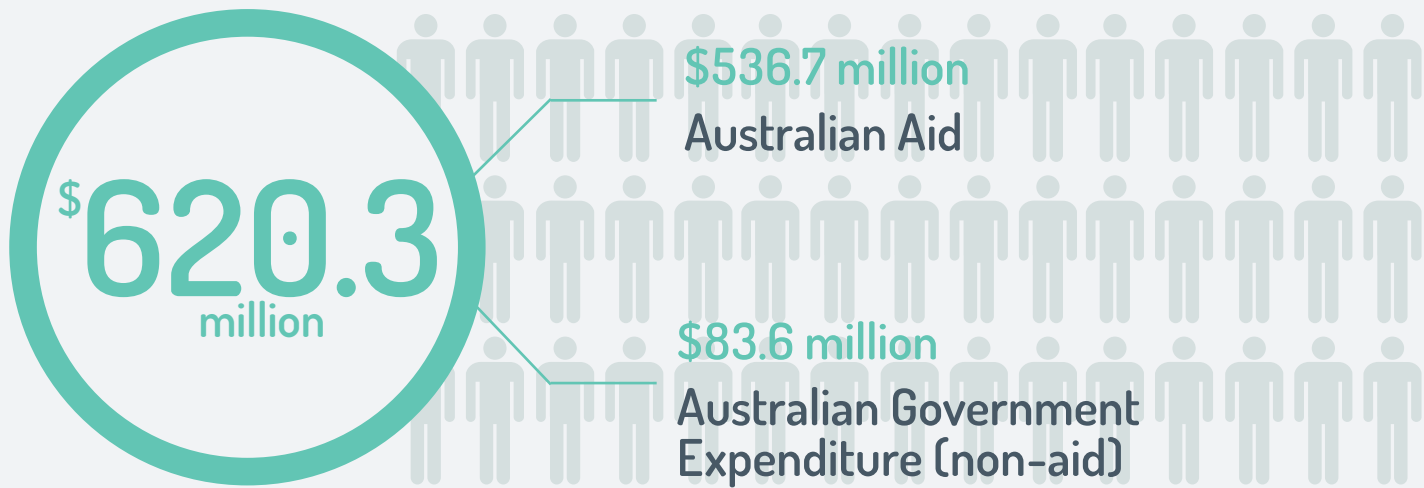




# AUSTRALIA AND PAPUA NEW GUINEA

## TOTAL AUSTRALIAN GOVERNMENT SUPPORT\* (2015-16)



TWO-WAY GOODS AND SERVICES TRADE (2015)

**\$5.7 BILLION**

AUSTRALIAN INVESTMENT (2015)

**\$18.4 BILLION**

SEASONAL WORKERS FROM PAPUA NEW GUINEA

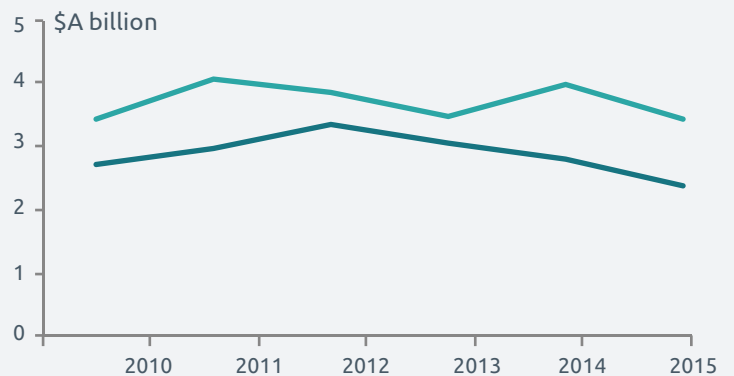
**42**

MIGRANT REMITTANCES FROM AUSTRALIA TO PAPUA NEW GUINEA

**US \$8 MILLION**

## TWO-WAY TRADE

- imports to Australia from Papua New Guinea
- exports from Australia to Papua New Guinea

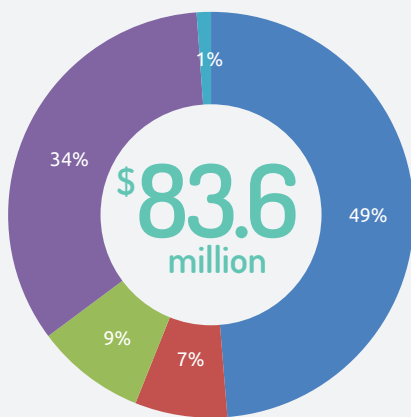


Sources: Department of Foreign Affairs and Trade – scholarships (2016), volunteers (2015-16); New Colombo Plan (2016); Department of Education – international students (2015); Australian Bureau of Statistics – trade and investment (2015), resident population by country of birth (Census 2011); Department of Immigration and Border Protection – visitors, seasonal workers (2015-16); World Bank – remittances (2015)

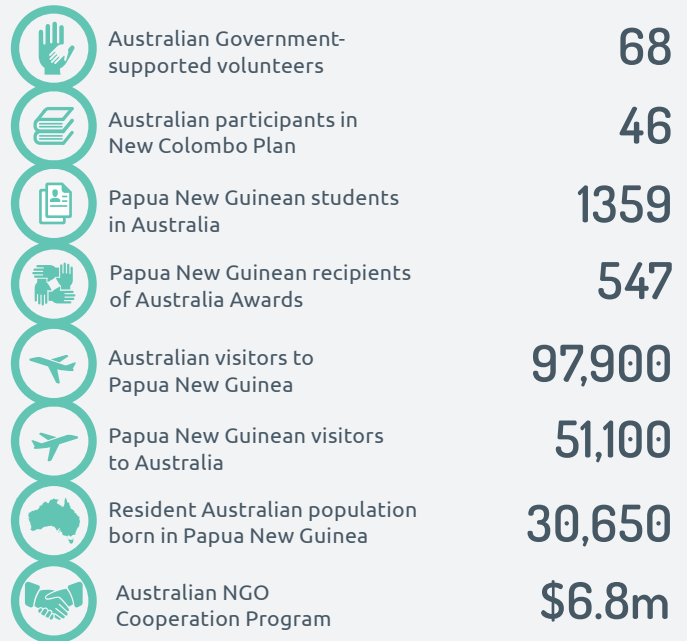
\*Total Australian Government support comprises Official Development Assistance (aid) and Other Official flows (non-aid), based on OECD Development Assistance Committee guidelines.



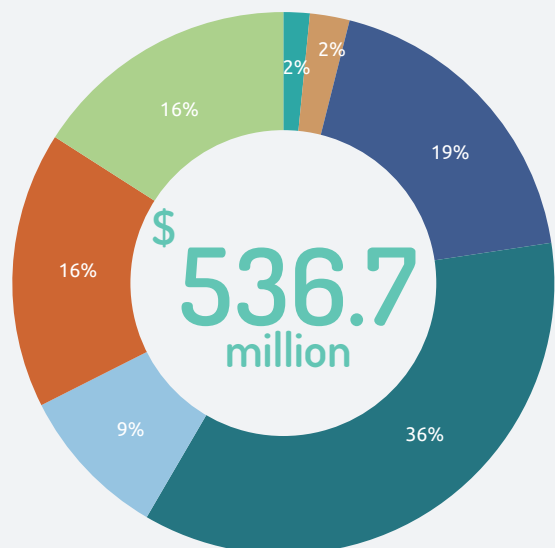
## Australian Government Expenditure (non-aid) 2015-16



## CONNECTING PEOPLE



## Australian Aid to Papua New Guinea, by Investment Priorities 2015-16



**AUSTRALIAN SHARE OF TOTAL OFFICIAL DEVELOPMENT ASSISTANCE TO PAPUA NEW GUINEA - 67.8%**  
**AUSTRALIAN AID COMPARED TO PAPUA NEW GUINEA'S ECONOMY - 2.5% OF GNI**

Further information: *Australian Engagement with Developing Countries: Part 2: Official Sector Statistical Summary 2015-16.*