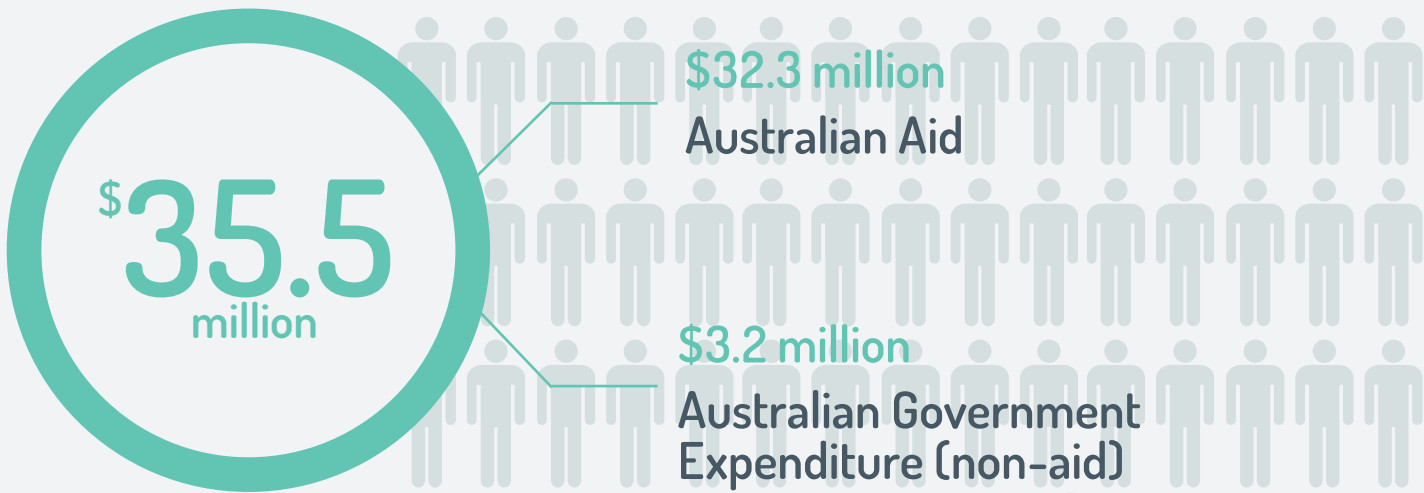




AUSTRALIA AND TONGA

TOTAL AUSTRALIAN GOVERNMENT SUPPORT* (2015-16)



TWO-WAY GOODS AND SERVICES TRADE (2015)

\$73 MILLION

AUSTRALIAN INVESTMENT (2015)

\$2 MILLION

SEASONAL WORKERS FROM TONGA

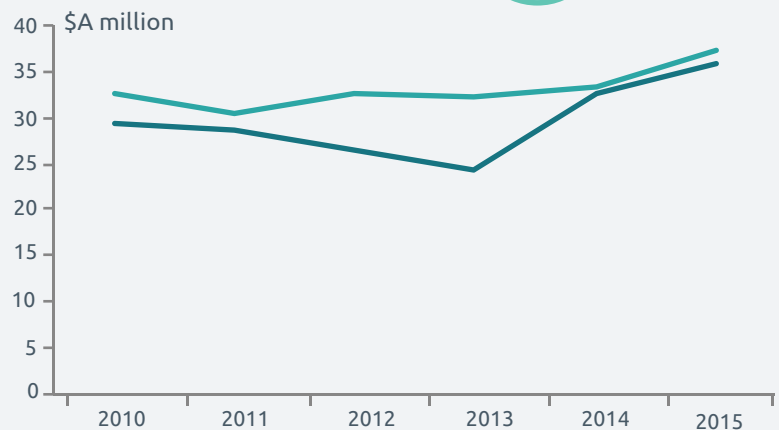
2,624

MIGRANT REMITTANCES FROM AUSTRALIA TO TONGA

US \$22 MILLION

TWO-WAY TRADE

- imports to Australia from Tonga
- exports from Australia to Tonga

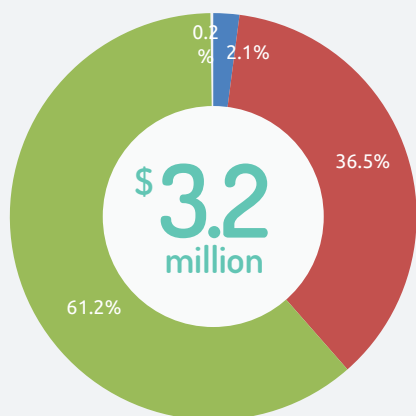
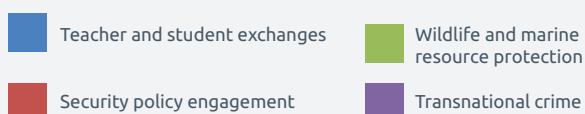


Sources: Department of Foreign Affairs and Trade – scholarships (2016), volunteers (2015-16); New Colombo Plan (2016); Department of Education – international students (2015); Australian Bureau of Statistics – trade and investment (2015), resident population by country of birth (Census 2011); Department of Immigration and Border Protection – visitors, seasonal workers (2015-16); World Bank – remittances (2015)

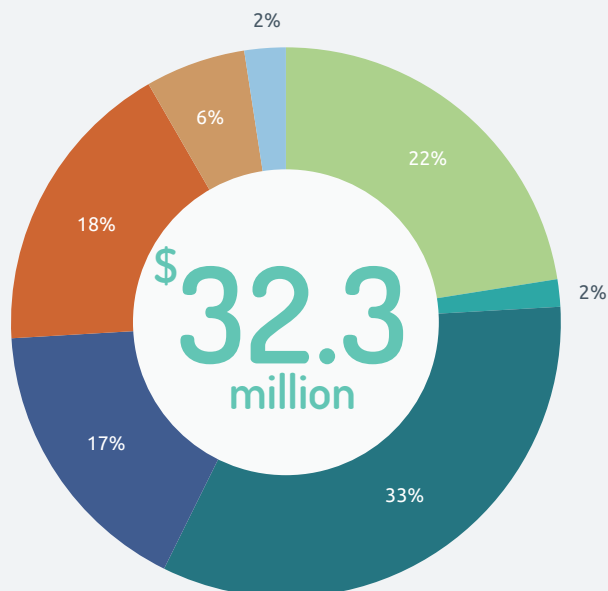
*Total Australian Government support comprises Official Development Assistance (aid) and Other Official flows (non-aid), based on OECD Development Assistance Committee guidelines.



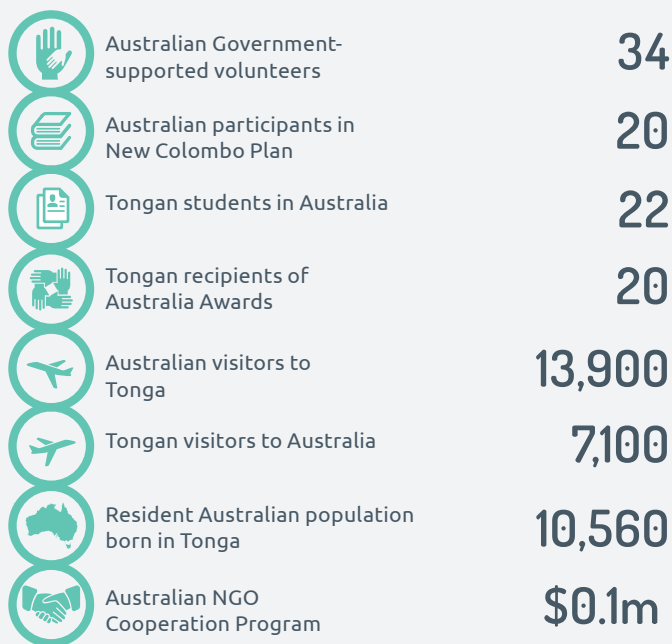
Australian Government Expenditure (non-aid) 2015-16



Australian Aid to Tonga, by Investment Priorities 2015-16



CONNECTING PEOPLE



AUSTRALIAN SHARE OF TOTAL OFFICIAL DEVELOPMENT ASSISTANCE TO TONGA - 27.9%
AUSTRALIAN AID COMPARED TO TONGA'S ECONOMY - 5.1% OF GNI

Further information: *Australian Engagement with Developing Countries: Part 2: Official Sector Statistical Summary 2015-16.*