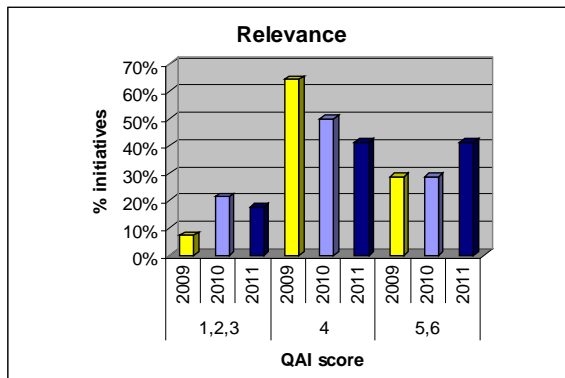


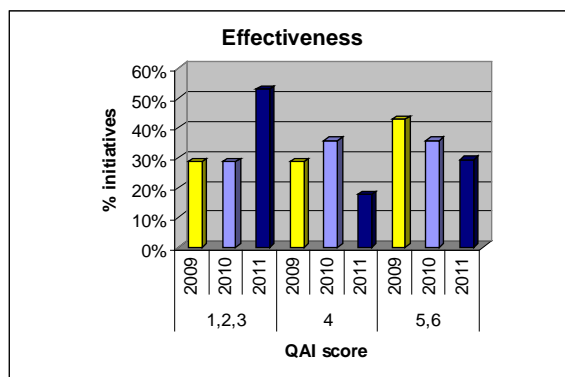
## ANNEX 2: AusAID internal quality assessments.

Each year AusAID assesses the quality of its programs against the principles of the Development Assistance Committee (DAC) for Evaluating Development Assistance. The data presented in the following graphs represents the percentage of programs rated against each of the scoring categories for the East Timor Country Program between 2009-2011. A score of 6 represents very high quality and scores of 1 indicates very poor quality against the respective criteria.

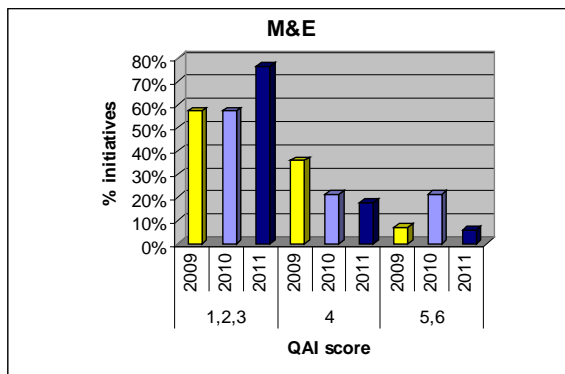
### Quality at implementation



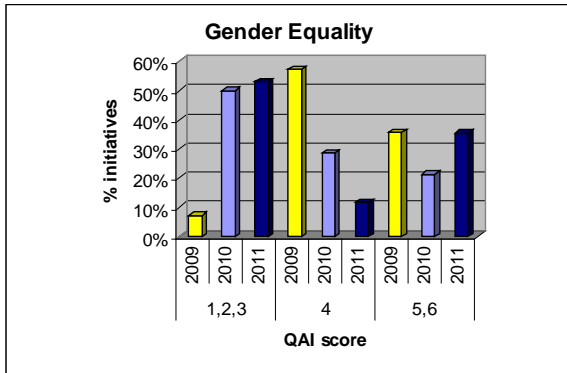
**Relevance** improved slightly in 2011 from 2010 due to one less relevant initiative closing and two new phases of health programs receiving positive ratings. Six of the less relevant initiatives, including all initiatives that rated poorly and half that rated 4, will close in 2012



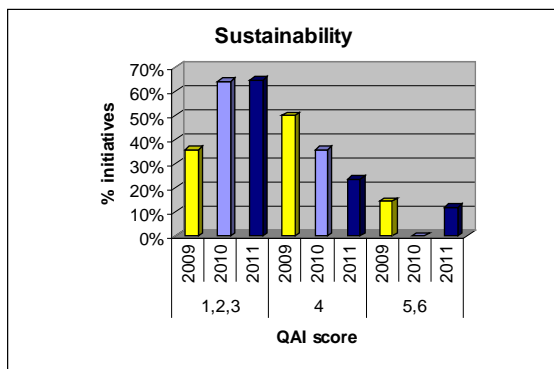
**Effectiveness** scores declined in 2011 from 2010 largely due to new information gathered through improved by M&E systems. This was the case for our governance, education and health programs.



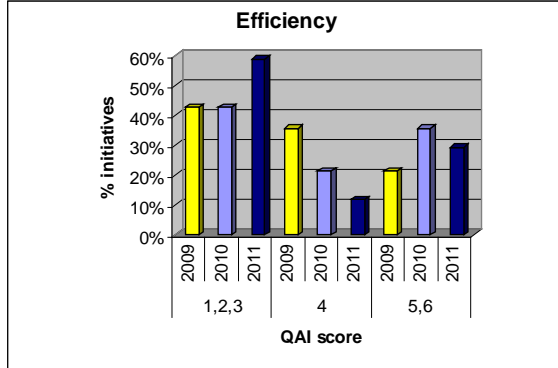
**Monitoring and Evaluation** ratings declined due largely to improved progress report appraisal, stronger evaluation insights and less exemptions sought. Of the poorly rated initiatives, half will end in 2012 and two are going through re-design so it is expected that improvements will be achieved in 2012.



**Gender equality** scores improved in 2011 due to better mainstreaming across programs, especially in agriculture and governance. Of the 9 that rated poorly, 6 will end in 2012.



**Sustainability** scores improved in 2011 as GoTTL commitment improved. Of the 11 initiatives that rated poorly, 6 will end in 2012 and two will enter new phases.



**Efficiency** scores declined mainly due to weak management by partners and more active AusAID monitoring